

Est. 1994

2(f) & 12 (B): March 2006

Hanuman Shikshan Prasarak Mandal, Sonpeth's

**LATE RAMESH WARPUDKAR ARTS, COMMERCE & SCIENCE COLLEGE,
SONPETH. DIST. PARBHANI 431516 (MS)**

NAAC Accredited Grade 'B' with 2.03 CGPA (Validity: 02 March 2020)

(Affiliated to: Swami Ramanand Teerth Marathwada University, Nanded)

Web: www.warpudkarcollege.com Email: lrwsonpeth@gmail.com. Mob. 09423779000



Shri. P.R. Kadam

President

Dr. V.D. Satpute

Principal



TEACHERS SYLLABUS FEEDBACK REPORT (2019-20)

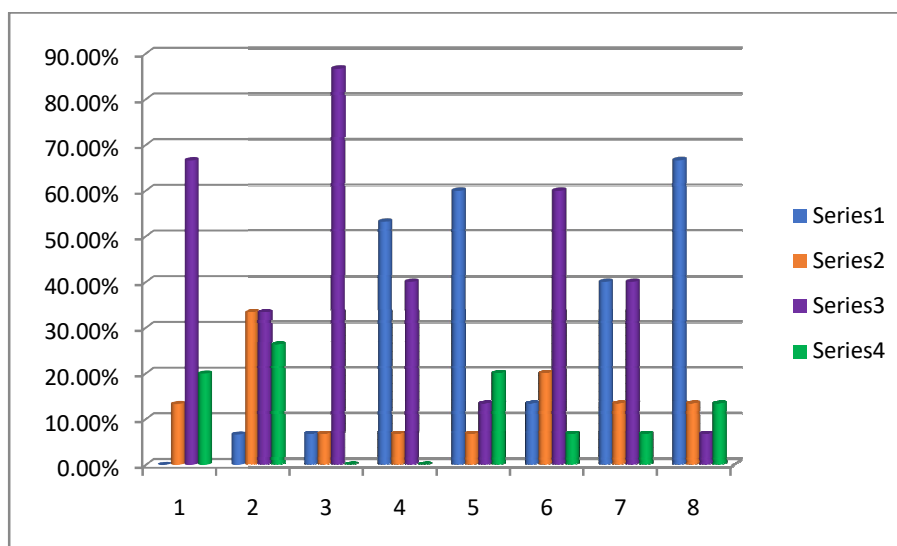
IQAC has taken feedback drive from the Teacher regarding the Syllabus considering following points-

It was analysed by the experts committee and forwarded to the authority for appropriate action.

Feedback was taken randomly from 15 Teachers on sample basis.

TEACHERS SYLLABUS FEEDBACK REPORT (2020-21)

Que. No.	A	B	C	D	TOTAL
1	0.00%	13.33%	66.66%	20.00%	100%
2	6.66%	33.33%	33.33%	26.26%	100%
3	6.66%	6.66%	86.66%	0.00%	100%
4	53.33%	6.66%	40.00%	0.00%	100%
5	60.00%	6.66%	13.33%	20.00%	100%
6	13.33%	20.00%	60.00%	6.66%	100%
7	40.00%	13.33%	40.00%	6.66%	100%
8	66.66%	13.33%	6.66%	13.33%	100%



Feedback of teachers about Syllabus was collected on 08 different sample points and after assessment we observed the results for every sample point as follows:

1. Regarding last five years syllabus of university **0% Average, 13.33% Alright, 66.66% Great, and 20.00% Perfect.**
2. General opinion about the course **6.66%Business Oriented, 33.33% Knowledgeable, 33.33% Practical and 26.26% Cultured.**
3. Does the curriculum meet the intellectual capacity of the students? **6.66% Partially agree, 6.66% Completely agree, 86.66% Strongly agree and 0.0% Strongly disagree.**
4. Is the syllabus comprehensive in terms of subject-matter? **53.33% Strongly agree, 6.66% Partially agree, 40.00% Completely agree and 0.0% Strongly disagree .**
5. Is the social commitment and regionalism elaborated in the curriculum? **60.00% Strongly agree, 6.66% Partially agree, 13.33% Completely agree and 3.20% Strongly disagree.**
6. Are the objectives of higher education achieved through the relevant syllabus? **13.33% Average, 3.20% Completely agree, 60.00% Strongly agree and 6.66% Partially agree.**
7. Have you communicated your opinion about curriculum to the university? **40.00% Yes, 13.33% Written, 40.00% Discursive and 6.66% No**
8. Have you consulted or discussed with other relevant subject experts about the said syllabus? **66.66% Strongly agree, 13.33% Strongly disagree, 6.66% Partially agree and 13.33% Completely agree.**


PRINCIPAL
 Late Ramesh Warpudkar (ACS)
 College, Sonpath Dist. Parbhani